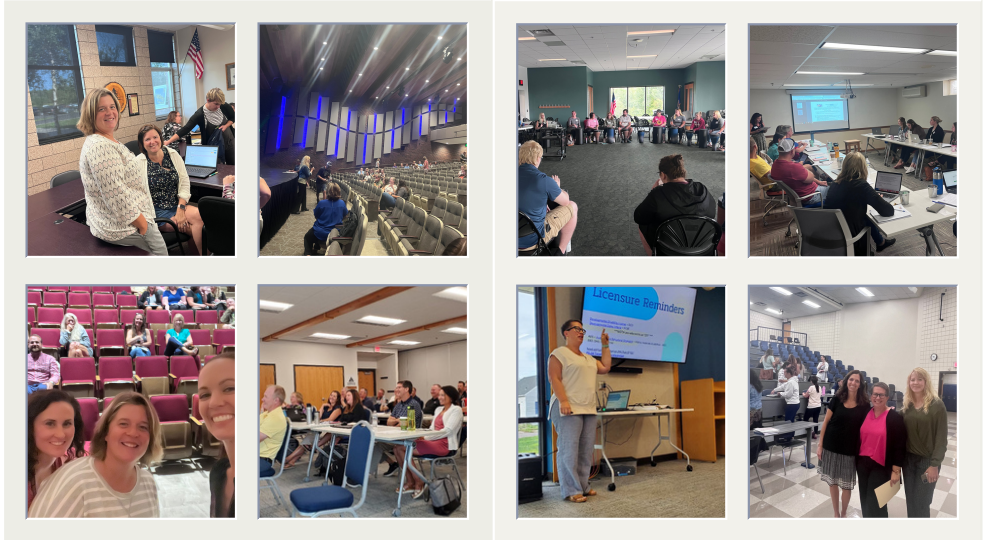


Director's Desk

Back to school! I hope you are all settling into schedules and enjoying time connecting with students. Being new to this role, I was not sure what to expect starting the school year. The answer has been - a whirlwind! Our NLSEC team provided training to building administrators at our annual "Principal's Academy" at the Cloquet Library. We then hosted teachers new to Special Education at our "New Teacher Training." Finally, coordinator teams presented at 9 different "Back to School" events at our member districts. It was great to meet so many new people and reconnect with many former colleagues. As many of you know, I am coming back to my roots with this role and so excited to be working in Special Education again. Wishing you the BEST school year!
~Jessa

Welcome Back!



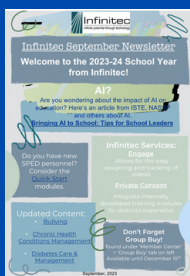
Due Process Tip: When Students with an IEP Move Into Your District

When new students enroll in your district and have an existing IEP, there are specific procedures to be followed to ensure the student is reflected in the district's list of students receiving special education. The procedures are different for a student coming from a MN school district or from out of state. Detailed instructions are included [HERE in this handout](#) on the NLSEC website. Finally, remember that a PWN generates a data sheet that needs to be given to your MARSS contact to ensure that the student data is accurate in the district's student information system.

Infinitec



Click here for the new one page newsletter



SECONDARY TRANSITION WORKSHOPS

Register here: How To Lead A Secondary Transition Focused IEP Meeting

This workshop will focus on changing your mindset as well as the IEP teams with what an IEP meeting should look and sound like.



AT UPDATES

REGION 3 AT SMORE NEWSPAPER

New! Region 3 AT Newsletter

This newsletter is distributed via email to a established AT listserv in the NLSEC. If you wish to be on this email list, contact Shannon Proulx at sproulx@nlsec.org.

[Click here to see the first issue!](#)



It's Back!



April 15-17, 2024 in Alexandria, MN
This is a statewide professional development conference to support the workforce and low incidence disability areas in the State of Minnesota.

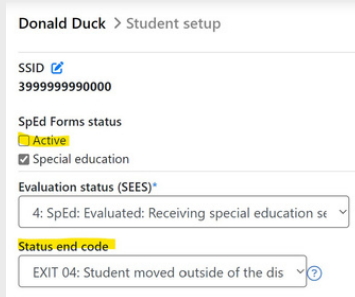
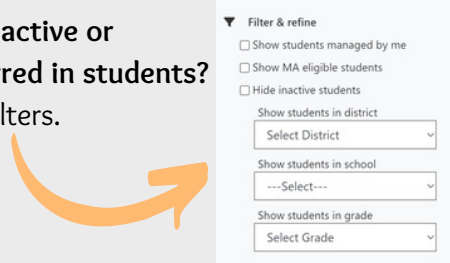
[Charting the C's website](#)



SPED FORMS UPDATES

Verion 2.0 is here!

- **New features** available are the search bar, click on the symbols (✓ ⚠️ -) to the right of the student name for more information and an option to keep the hamburger menu open. Check out this [summary video](#) for more info.
- **Looking for inactive or newly transferred in students?** Clear all your filters.
- **How do I make a student inactive?** Uncheck "Active" in the student setup, update the SEES and select the appropriate Status end code. Then save!



WE ARE HERE FOR YOU!

Our NLSEC team supports 13 member school districts and provides related services including: Special Education Coordinators, Audiology, Autism Consultants, Deaf Hard of Hearing, Early Intervention, Early Childhood Special Education, Lending Libraries, Occupational Therapy, Physical Therapy, Physical Health Disability Consulting, Behavior Consulting, Assistive Technology, Secondary Transition, Work Based Learning, Vision, etc. Wow! That is quite the list! Check out our updated service page for information on district-specific contacts and please reach out to our team anytime! [NLSEC Service Assignments](#)



NLSEC Staff 2023-24

New NLSEC Staff

| | | | | | | |
|--|---|--|---|------------------------------------|---|--|
| <p>Jessa Cook Special Education Director</p> | <p>Emily Thompson Special Education Coordinator</p> | <p>Laura Wieck Special Education Coordinator</p> | <p>Jenny Bouchie ECSE Coordinator</p> | <p>Kari Spaete Audiologist</p> | <p>Mindy DeLacey Occupational Therapist</p> | <p>Ashley Allen Physical Therapist</p> |
|--|---|--|---|------------------------------------|---|--|