

Director's Desk

The snow has started to fly!

I hope this newsletter finds you well. As we move into November, I want to express my gratitude for the hard work and dedication you all continue to show in supporting students each and every day.

At NLSEC we are also working to make sure that families are feeling supported by building capacity with our Parent Support and Advisory Committee. The meetings are currently held four times per year and information can be found under the "[Parents](#)" tab on our NLSEC website. Look for a flyer to send home to families coming out before the next meeting in December.

We are excited to celebrate our teams in the districts. A huge THANK YOU to Chloe Knop as our very first this school year: Featured Teacher!

Be sure to check out all of the upcoming training opportunities and please continue to share with us ways that we can support the amazing work that you do for students every day.

Warm Regards,
-Jessa

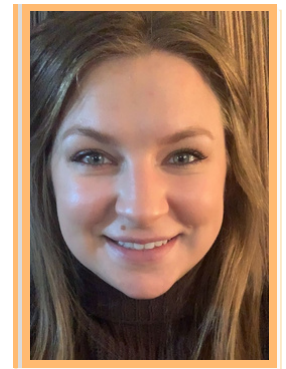
Child Count / December 1 Count

Each year teams receive a reminder to update caseloads for December 1st count. Why is that information important? The information contained in the child count reports is collected each year and represents a count of Minnesota children and youth, ages birth through 22, who are eligible for and receiving special education and related services. December 1 count is completed through MARSS. It is reported to the U.S. Department of Education and provides information regarding special education demographics in Minnesota. December 1 count is then used to determine state and federal funding for special education programs. The amount of funding a district receives is based on the number of students with disabilities who are enrolled in the district. The number is also used to identify trends in special education enrollment and ultimately to monitor effectiveness of programming. This information is important for putting together an accurate picture of the students we serve. Thank you for your help in making sure numbers are accurate.

Featured Teacher - Chloe Knop

Chloe was nominated by a colleague because she is a leader, has great rapport with her students and excellent classroom management. She is in her second year providing speech/language services at the Minnehaha Elementary for Lake Superior School District. Chloe has demonstrated the ability to effectively communicate with families, build positive relationships with students, and create a welcoming environment inside and outside of the speech room.

[Read the full article here.](#)



Infinitec

[Click here for the
October newsletter](#)

[Fall Webinars list here](#)



December 2nd is National Special Education Day!

Special Education Day is celebrated on December 2 to commemorate the signing of the Individuals with Disabilities Education Act into law on this day in 1975 (IDEA). The law guaranteed a free appropriate public education for all children with disabilities.



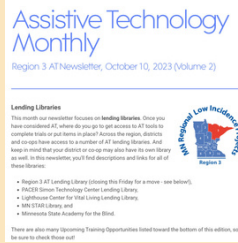
AT UPDATES

Region 3 AT Newsletter - October 2023

Featured articles:

- Region 3 AT Lending Library new items and the library is moving
- Lending Libraries - PACER, Lighthouse, STAR, and Academy for the Blind
- Two Minute Tech

[Click here to view the second issue!](#)



SAVE THE DATE

TRAINING

ASSISTIVE TECHNOLOGY (AT) TO FOSTER INDEPENDENCE IN NON-READERS

February 13th, 2024

Carlton County Transportation Building

8:30-11:30am

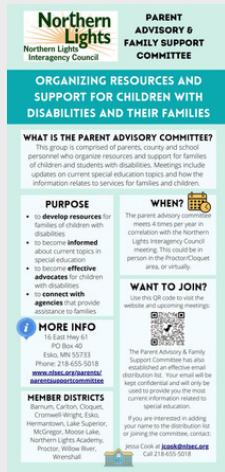
Registration to follow after the new year



PARENT ADVISORY & FAMILY SUPPORT COMMITTEE

Welcoming New Members!

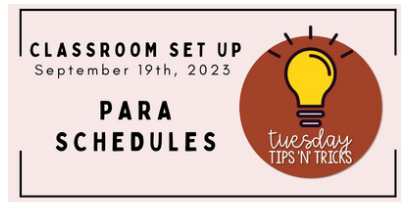
- This group is comprised of parents, county and school personnel who organize resources and support for families of children and students with disabilities. Meetings include updates on current special education topics and how the information relates to services for families and children.
- The parent advisory committee meets 4 times per year in correlation with the Northern Lights Interagency Council meeting. This could be in person in the Proctor/Cloquet area, or virtually.
- If interested in attending meetings or adding your name to the email distribution list, contact Jessa Cook jcook@nlsec.org.



TEACHERS WORKING WITH STUDENTS WITH ASD... CHECK OUT THIS NEWSLETTER!

Tuesday Tips 'N' Tricks

by Jennifer Guettler
Minnesota Low Incidence Projects



This newsletter provides information about para schedules, the STAR Media Center, and upcoming professional development opportunities.

Providing, Teaching and Using Schedules for EVERYONE

Creating a classroom schedule, para schedules and individual student schedules is essential to your classroom setup. By scheduling the day, you are taking the first step to creating routines for your classroom. You, the para, and the students will know what you are doing and when you are doing it. This eases anxiety and frustration (for all) and creates independence. This week, we will go in-depth about para schedules. Specifically, we'll discuss two ways to develop para schedules using Google Sheets and the E-Scheduler on the STAR Media Center.

[Parent Resources on NLSEC website](#)



MENTORING DAY

Monday, March 11, 2024

Fond du Lac Tribal & Community College

More info to come! [Mentoring Day website](#)

OAE TRAINING FOR ECSE TEACHERS & SLP'S

REGISTER NOW!

Tuesday, Nov. 28th, 2023 from 12:30-2:30pm

NLSEC Conference Room

Contact Jenny Bouchie for the Google Calendar invite jbouchie@nlsec.org

This training is for Early Childhood staff responsible for providing evidence-based hearing screenings. This short training is intended for first-time learners or for those previously trained who need a refresher.

DCD Community of Practice Opportunity

- The DCD Community of Practice will meet virtually on the second Thursday of each month from 3:15 - 4:15 pm. Use the link below to register for the meeting and to get a Google calendar invite with a Zoom link:
- Next meeting November 9 - [REGISTER HERE](#)
- Topics: assessment tools and procedures (criteria and programming considerations), working with paraprofessionals, data rich PLAAFS, measurable IEP goals/objectives and data collection, curriculum, literacy book study and more!
- Questions: Heidi Halker hhalker@isd6070.org