

Director's Desk

Happy 2024! As we step into the New Year I would like to take this opportunity to thank each of you for your continued dedication to our students and families. A new year provides an opportunity to reflect and look toward the future. You will notice that at NLSEC we are working to expand professional development opportunities for all staff. Our next event will be Paraprofessional Day on January 15th! You will also hear more about our Parent Advisory Council this year as we work to increase ways to help families participate at all stages through the special education process. Wishing you an amazing 2024! -Jessa



Thank you to Senator Jason Rarick for meeting with NLA Board Members to tour Northern Lights Academy and discuss the fabulous students we support from our member districts.

Out of State Evaluations

This year we have seen an uptick in the number of out-of-state evaluations and IEPs arriving at our member districts. Remember that the team can make the decision to adopt, amend, or start a new evaluation. The team will need to make sure that the most recent evaluation data meets eligibility criteria for the state of Minnesota. Teams will need to start to provide FAPE right away with comparable services for the student. Then a meeting with the family to discuss next steps and a PWN to start a plan can be put together. SpEd Forms has the documents you will need. Reading through out-of-state evaluations and IEPs can also be another reminder to make sure that we are writing due process documents with "transferability" in mind if any of our students were to move to another state. Making sure that our documentation is comprehensive and data driven is important for so many reasons!

Featured Teachers - Jana Olson & Nicole Kedrowski

Jana Olson has been a Speech-Language Pathologist with Esko Schools for 17 years. She was nominated because she does a phenomenal job of supporting staff and students in creating positive and successful learning environments!



[Read Jana's full article here](#)

Nicole Kedrowski was nominated because of her positive attitude, ability to work well with colleagues and her devotion to students and their families in the Proctor School District. Nicole is committed to furthering her education so she can best meet the needs of students.



[Read Nicole's full article here](#)

Infinitec

NEW Training: AT Tools & Strategies, Support Executive Function & Neurodiversity
Jan 17 ~ 8:30-3:30
\$45

[Register here](#)

[Click here - December edition](#)



THANK YOU!

Communication & Advisory Committee Members for your attendance and sharing information with your buildings!



AT UPDATES

Region 3 AT Newsletter -
December 2023



Featured articles:

- Writing Supports
- Voice Typing and Dictation
- AT Select website

[Click here to view the December issue!](#)

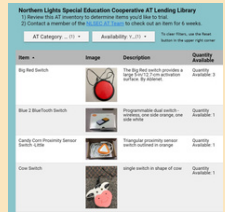
REGISTER NOW!

AT for Non-Readers
Feb. 13, 2024
8:30-11:30
Carlton County
Tran. Bldg.

LOOKING TO CHECK OUT ASSISTIVE TECHNOLOGY ITEMS?

The NLSEC has an AT Lending Library

Check out this [new view](#) to find AT items by category. Contact a [NLSEC AT Team Member](#) to check out an item for 6 weeks.

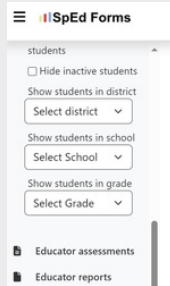


SPED FORMS MISSING PROVIDERS REPORT

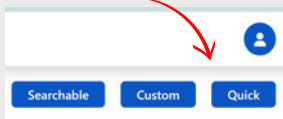
Please check if your provider number is listed on the service page for students you are providing services. Your provider number is tied to reports and billing.

To quickly check, run the **Missing Providers Report** in SpEd Forms:

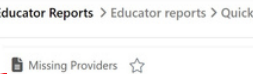
1. Open the hamburger menu and select Educator reports.



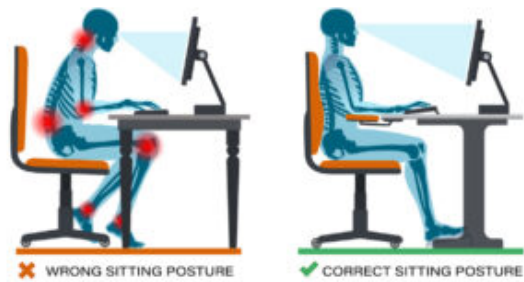
2. On the top right of this page, click Quick icon



3. Scroll to report "Missing Providers"



CARING FOR YOUR BODY AT WORK POSITIONING



- Eye level at the top of the screen or 1 to 2 inches below
- Monitor roughly an arm's length away
- Chair with lumbar support
- Elbows bent at 90 degrees with wrists flat at the keyboard
- Knees level with hips or slightly below with feet flat on the ground
- Avoid sitting for prolonged periods

TEACHER WORK NIGHT



November Teacher Work Night was a success! Look for more teacher work night opportunities each month.

OAE TRAINING

In November, NLSEC hosted an OAE screener training for providers who work with the early childhood population. OAE screening is the one of the most appropriate methods for identifying young children at risk for permanent hearing loss. Stayed tuned for more information on OAE screenings in the March 2024 newsletter!



Paraprofessional Training JANUARY 15, 2024

Esko High School * 8:30-2:30pm

Free for all Para's with breakout sessions on mental health, ASL, accommodations, job coaching, MA billing, person centered planning, healthy relationships and more!

